

39Z-Meter Truck-Mounted Specifications

Length	40' 11"	(12.48m)
Width	8' 2"	(2.50m)
Height	12' 9"	(3.90m)
Wheelbase	231"	(5,867mm)
Front axle weight	18,831 lbs	(8,542kg)
Rear axle weight	37,564 lbs	(17,039kg)
Approx total weight	56,395 lbs	(25,581kg)

Based on Model MACK MRU 613 with .16H pump cell.

Weights are approximate and include pump, boom, truck, driver and full fuel tank.

Varies with options selected.

Dimensions will vary with different truck makes, models and specifications.

Boom Specifications | Multi-Z Design

Height & Reach

Vertical reach	125' 8"	(38.30m)
Horizontal reach	110' 3"	(33.60m)
Reach from front of truck*	100' 9"	(30.70m)
Reach depth	78' 9"	(24.00m)
Unfolding height	29' 6"	(9.00m)

4-Section Boom

1st section articulation	90°	
2nd section articulation	180°	
3rd section articulation	245°	
4th section articulation	230°	
1st section length	31' 10"	(9.70m)
2nd section length	26' 7"	(8.10m)
3rd section length	26' 11"	(8.20m)
4th section length	27' 3"	(8.30m)

General Specifications

Pipeline Size (ID) metric ends	5"	(125mm)
Rotation	365°	
End hose — length	10' 0"	(3.00m)
End hose — diameter	5"	(125mm)
Outrigger spread L-R — front	19' 8"	(6.00m)
hydraulically extended out & down		
Outrigger spread L-R — rear	24' 7"	(8.10m)
hydraulically swing out & extend down		

Pump Specifications

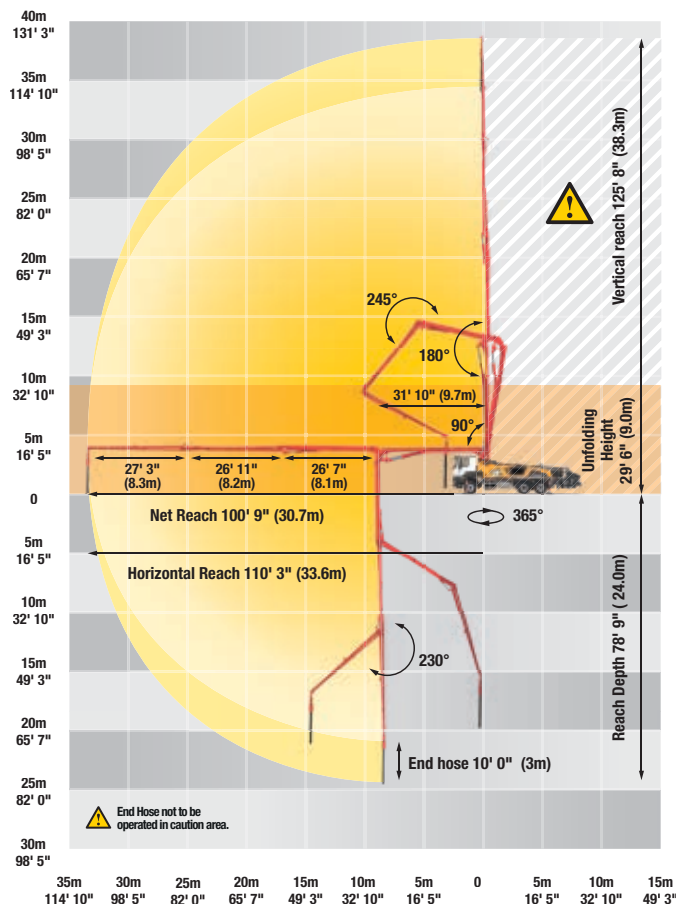
	39Z.13 HPD	39Z.16H
Output — rod side	180 yd ³ /hr (138m ³ /hr)	210 yd ³ /hr (160m ³ /hr)
— piston side	123 yd ³ /hr (94m ³ /hr)	141 yd ³ /hr (108m ³ /hr)
Pressure — rod side	1,233 psi (85 bar)	1,233 psi (85 bar)
— piston side	1,885 psi (130 bar)•	1,885 psi (130 bar)•
Material cylinder diameter	9" (230mm)	9" (230mm)
Stroke length	83" (2,100mm)	83" (2,100mm)
Maximum strokes per minute		
— rod side	26	31
— piston side	18	21
Volume control	0-Full	0-Full
Vibrator	Standard	Standard
Hard-chromed material cylinders	Standard	Standard
Hydraulic system	Free Flow	Free Flow
Hydraulic system pressure	5,075 psi (350 bar)	5,075 psi (350 bar)
Differential cylinder diameter	6.3" (160mm)	5.5" (140mm)
Rod diameter	3.5" (90mm)	3.1" (80mm)
Maximum size aggregate	2.5" (63mm)	2.5" (63mm)
Water tank — pedestal	185 gal (700L)	185 gal (700L)

Maximum theoretical values listed.

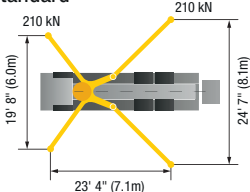
* Applies to units mounted on PMA stock truck — MACK MRU 613

• Standard delivery line system rated at max line pressure of 1,233 psi (85 bar)

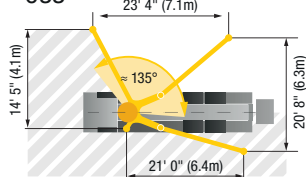
39Z-Meter Range Diagram



Standard



OSS



Putzmeister America, Inc.
1733 90th Street
Sturtevant, WI 53177 USA

Phone (262) 886-3200
Toll-free (800) 884-7210
Fax (262) 884-6338

www.PutzmeisterAmerica.com

pmr@putzam.com